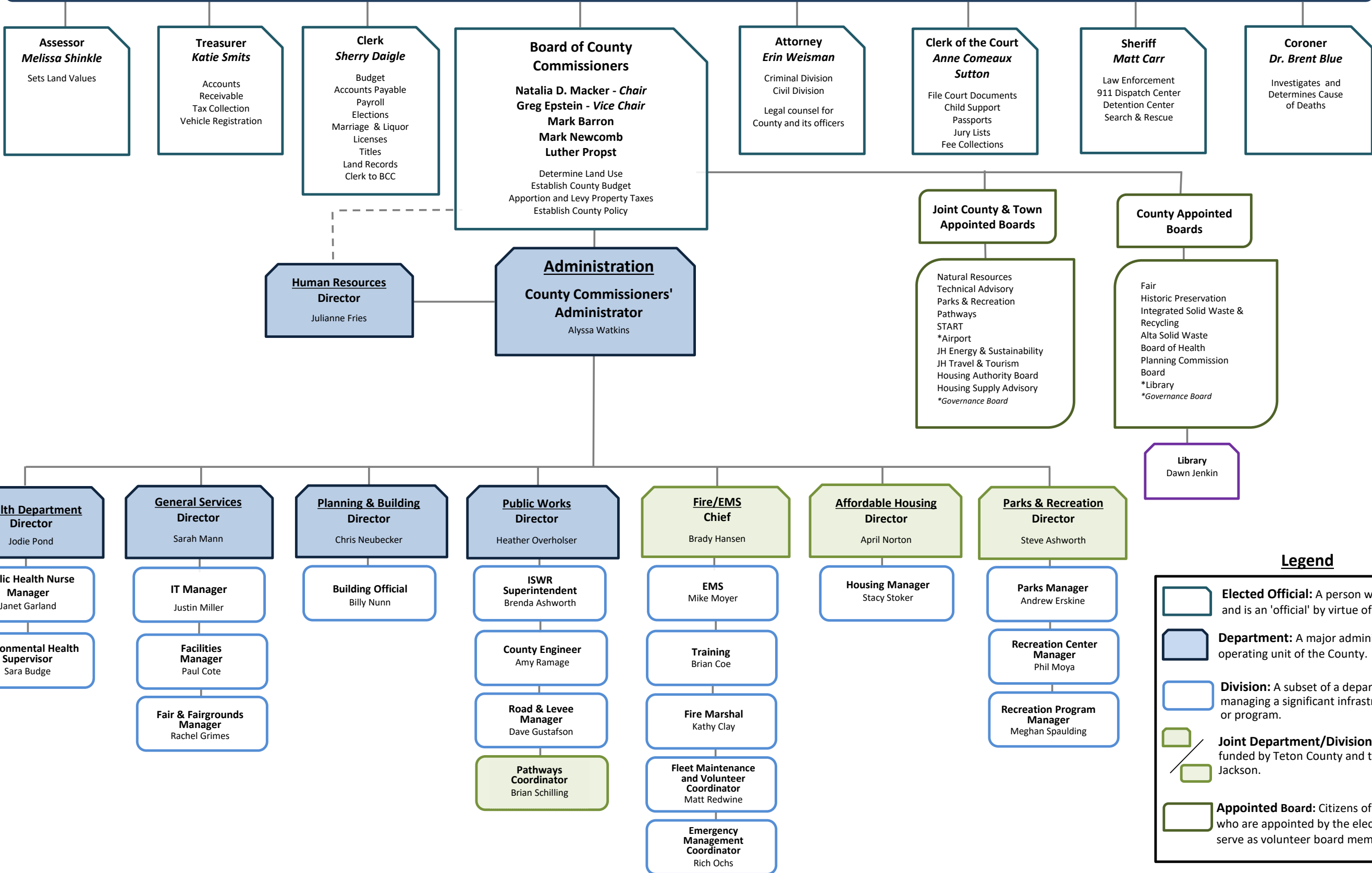


Teton County Organizational Chart



Legend

- Elected Official:** A person who won office and is an 'official' by virtue of an election.
- Department:** A major administrative or operating unit of the County.
- Division:** A subset of a department managing a significant infrastructure need or program.
- Joint Department/Division:** Jointly funded by Teton County and the Town of Jackson.
- Appointed Board:** Citizens of the community who are appointed by the elected body to serve as volunteer board members.